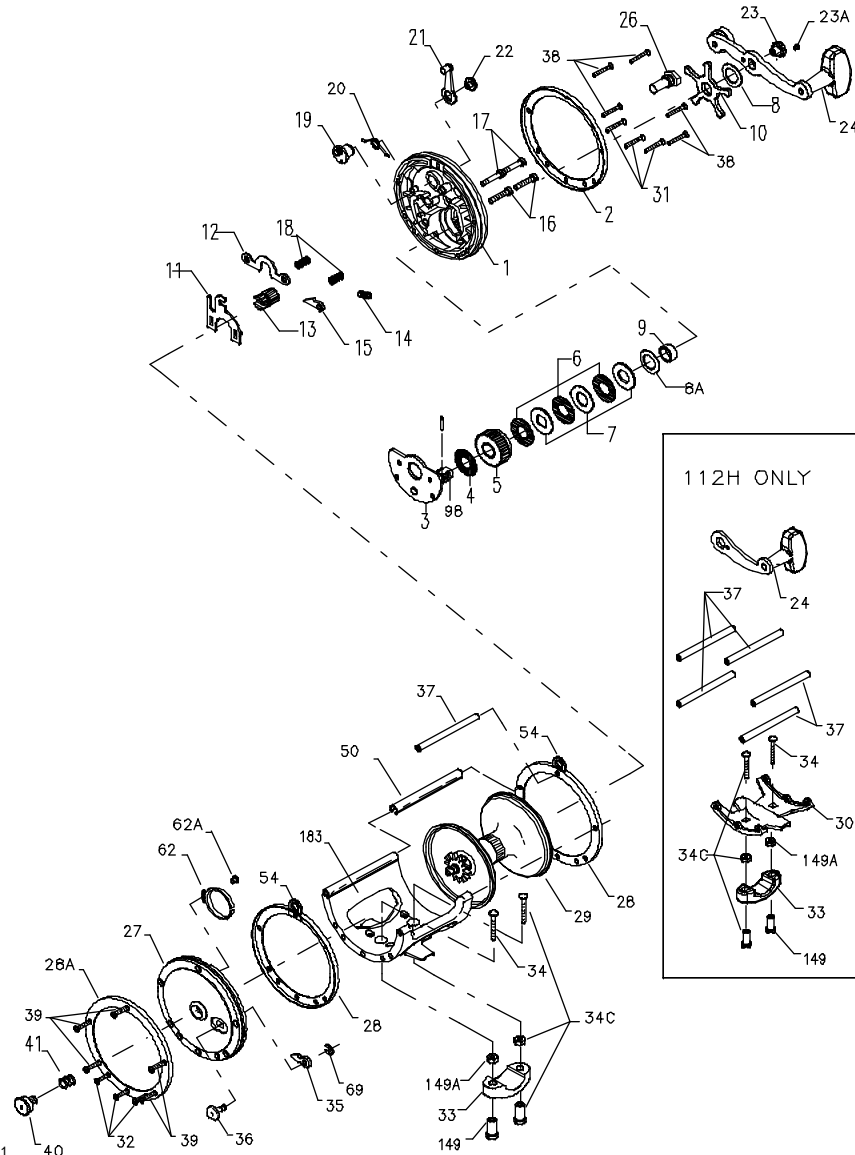




PARTS LIST FOR MODELS 112H AND 113



KEY NO.	112H PART NO.	113 PART NO.	DESCRIPTION
1	001 112H	001 113	Right Side Plate
2	002 112HO	002 113O	Outer Right Side Ring
3	003 112H	003 113	Bridge w/Sleeve
4	004 060	004 060	Fiber Washer
5	005 500	005 066	Main Gear
6	006 309	006 113	Drag Washer (3 req.)
7	007C500	007C060	Metal Drag Washer Set
8	008 060	008 060	Tension Spring
8A	-----	008 060	Tension Spring
9	009 060	009 066	Spacing Sleeve
10	010 060	010 066	Star Drag Wheel
11	011 099	011 113	Eccentric Jack
12	012 500	012 113	Pinion Yoke
13	013 500	013 113	Pinion
14	014 099	014 099	Dog Spring
15	015 309	015 099	Dog
16	016 060CH	016 060CH	Lower Bridge Screw (2 req.)
17	017 060CH	017 060CH	Upper Bridge Screw (2 req.)
18	018 060	018 060	Clutch Spring (2 req.)
19	019 250	019 113	Eccentric
20	020 060L	020 155	Eccentric Spring
21	021 049	021 066	Eccentric Lever
22	022 099	022 099	Eccentric Screw
23	023 060	023 060	Handle Screw
23A	110 060	110 060	Handle Lock Screw
24	024 112H	024 066	Handle
26	026 155	026 060	R.S. Bearing
27	027 112H	027 113	Left Side Plate
28	002 112HI	002 113I	Inner Ring (2 req.)
28A	028 112HO	002 113O	Outer Left Side Ring
29	029L112H	029L113	Spool
30	030 066	030 113	Stand
31	039 003 (2 req.)	039 009 (3 req.)	R.S. Stand Screw
32	032 017 (2 req.)	039 009 (3 req.)	L.S. Stand Screw
33	033 113	033 113	Rod Clamp
	*033R200	*033R200	Ringed Rod Clamp (Optional)
34	034 045	034 045	Clamp Screw (2 req.)
34C	034C045	034C045	Rod Clamp Screw w/Nuts
35	035 060	035 060	Click Tongue
36	036N209	036 113	Click Button
37	037 065 (5 req.)	037 113	Frame Post
38	039 009	039 009	R.S. Screw (5 req.)
39	039 003	039 009	L.S. Screw (5 req.)
40	040 060	040 060	Left Side Bearing
41	041 060	041 060	Left Side Bearing Spring
50	-----	050 113HL	Frame Cover Post
54	-----	054 113	Harness Lug (2 req.)
62	062 309	062 309	Click Spring
62A	063 209	063 209	Click Spring Screw
69	069B600	069B600	Retaining Ring
98	098 060	098 060	Gear Sleeve
149	149 045	149 045	Rod Clamp Nut
149A	149 200	149 200	Hex Nut (2 req.)
183	-----	183 113	Frame

*Not Shown